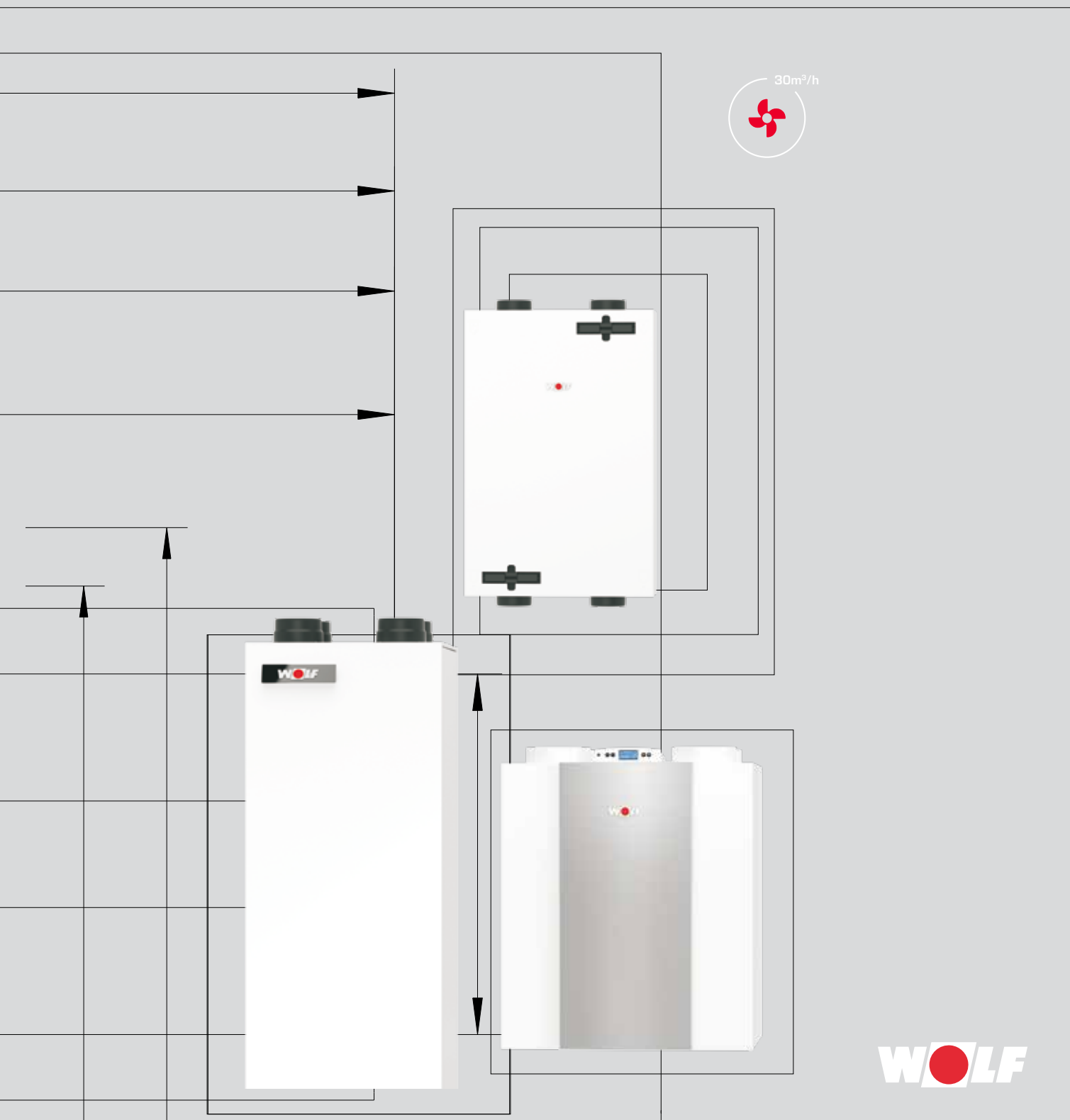
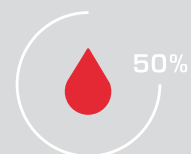


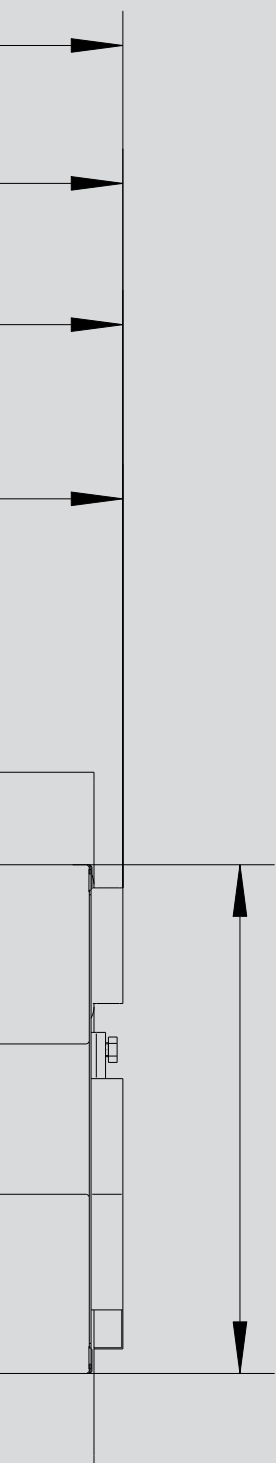
TECHNICAL DOCUMENTATION

WOLF COMFORT MECHANICAL VENTILATION

CWL EXCELLENT / CWL-T EXCELLENT / CWL-F EXCELLENT



WOLF



THE EXTENSIVE EQUIPMENT RANGE

from system supplier WOLF offers the ideal solution for commercial and industrial buildings, new build and modernisation projects alike.

The range of WOLF control units can meet any requirement for heating convenience.

All equipment is easy to operate, highly energy efficient and reliable.

Solar thermal systems can be swiftly integrated into existing systems.

WOLF equipment is easy and quick to install and maintain.

WOLF COMFORT MECHANICAL VENTILATION	04-05
UNIT VERSIONS	06
SPECIFICATION	07
EXCELLENT SLIMLINE UNIT	CWL-F-150/300
EXCELLENT	CWL-180
EXCELLENT	CWL-300/400
EXCELLENT	CWL-T-300
	CWL-D-70
CONTROL CWL EXCELLENT	12
CONTROL ACCESSORIES CWL EXCELLENT	12-13
ACCESSORIES	14-25
HOW IT WORKS CWL EXCELLENT	16
INSULATED DUCT SYSTEM CWL EXCELLENT / CWL	17-18
SILENCER	19
GENERAL INFORMATION FLEXIBLE DUCT SYSTEMS	20
AIR DISTRIBUTOR CWL EXCELLENT	21
FLEXIBLE HOSE SYSTEM, ROUND	22
FLAT DUCT SYSTEM EXCELLENT	23-24
SUPPLY/EXTRACT AIR VENTS	25
NOTES	26-27

Removable plastic cross and countercurrent plate heat exchanger

Heat provision efficiency max. 94 %

One fan each for supply and extract air, variable speed; low energy consumption through DC fans

Constant flow control keep the air volume constant at any selected fan speed. Consistently high efficiency is achieved and adjustments are limited to a minimum.

Automatic frost stat control offers optimum protection against freezing



Fully wired, filter change indicator on the 4-step switch

Clean, pollen-free fresh air - ventilation with your windows closed, keeping out the street noise [not only for allergy sufferers]



ADVANTAGES OF WOLF COMFORT MECHANICAL VENTILATION

CWL / CWL EXCELLENT

Standard connection options

available for air quality sensor, humidity sensor,
electrical preheating and reheating coil



Design software

- Design software based on DIN 1946-6.
- The exceptional level of user friendliness enables competent, reliable air volume calculation in next to no time.
- In addition, the software provides a complete list of materials, a matching quotation, numerous supplementary information, and a full ventilation concept in accordance with DIN 1946-6.
- Download from www.wolf.eu



COMFORT MECHANICAL VENTILATION

COMFORT MECHANICAL VENTILATION UNIT VERSIONS



COMFORT MECHANICAL VENTILATION		CWL-F-150 Excellent	CWL-F-300 Excellent	CWL-180 Excellent	CWL-300 Excellent	CWL-400 Excellent	CWL-T-300 Excellent	CWL-D-70
Max. air handling rate	m ³ /h	150	300	180	300	400	300	70
Mounting type	Wall mounting	●	●	●	●	●	○	●
	Ceiling mounting	●	●	○	○	○	○	○
	Floorstanding	○	○	●	●	●	●	○
Operating panel on the unit		○	○	●	●	●	○	●
Remote control	BM-2	●	●	●	●	●	●	○
	4-step switch	●	●	●	●	●	●	○
Bypass	Integral	●	●	○	●	●	●	●
	None	○	○	●	○	○	○	○
Electr. preheating coil	Integral	●	○	○	●	●	●	●
	Accessories	○	●	●	○	○	○	○
Hydr. reheating coil	Accessories	○	○	○	○	○	●	○
Electr. reheating coil	Accessories	●	●	●	●	●	●	○
Enthalpy heat exchanger	Accessories	○	●	○	●	●	○	○
Air quality, moisture CO ₂ sensor	Accessories	●	●	●	●	●	●	●
Passive house certificate		●	●	○	●	●	●	○
DIBt approval		●	●	○	●	●	applied for	applied for

GENERAL INFORMATION

Units with air handling rates of 50 - 400 m³/h.

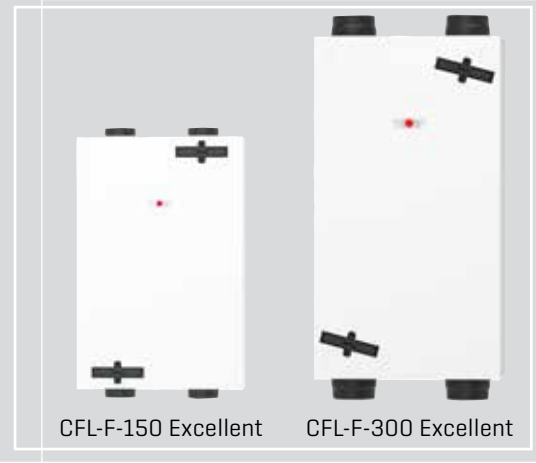
Suitable for detached houses and apartment buildings as well as offices and apartments.

The CWL Excellent Comfort mechanical ventilation system with heat recovery extracts stale air from the kitchen, bathroom and toilet areas. This air is routed across a cross- and countercurrent plate heat exchanger, and is expelled to the outside.

At the same time, fresh outdoor air is drawn into the system, cleaned by an air filter, heated by the cross and countercurrent heat exchanger and routed into rooms such as the living room, bedrooms and children's rooms.

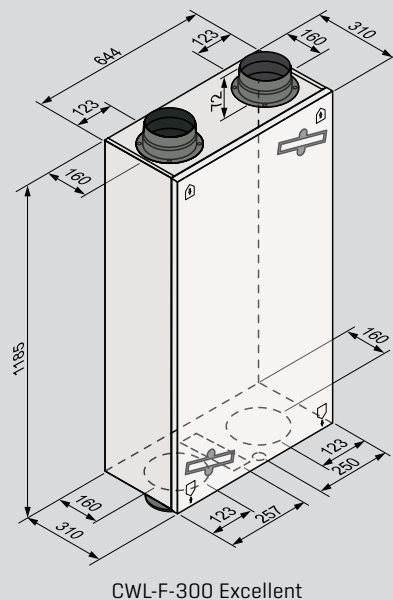
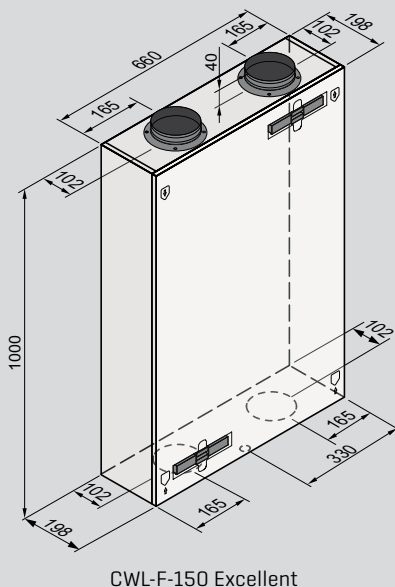
COMFORT MECHANICAL VENTILATION CWL-F-150/300 EXCELLENT SLIMLINE UNIT SPECIFICATION

- Compact, slimline design for ceiling and wall mounting
- Bypass as standard
- Category G4 filter; F7 as optional accessory
- Standard on the CWL-F-150 Excellent electrical integrated preheating coil 375W



CWL-F EXCELLENT		150	300
Energy efficiency class ¹⁾		A	A
Air flow rate at 150 Pa	m ³ /h	150	300
Max. heat provision efficiency	%	94	92
Dimensions			
Duct connection diameter	mm	125	160
Height	mm	1000	1185
Width	mm	660	644
Depth	mm	198	310
Filter category		G4 [F7 as accessory]	G4 [F7 as accessory]
Power factor	Cos φ	0.34 - 0.49	0.39 - 0.53
Power consumption	W	11 - 72	9 - 162
Power consumption (without preheating coil)	W	52 (at 125 m ³ /h and 100 Pa)	79 (at 225 m ³ /h and 100 Pa)
Weight	kg	25	37
IP rating	IP	30	30
Electrical connection		230 V / 50 Hz	230 V / 50 Hz

¹⁾ A+ with min. two sensors



COMFORT MECHANICAL VENTILATION
CWL-180 EXCELLENT
SPECIFICATION

OPTIONAL CONNECTIONS

To cope with varied installation situations, WOLF offers the unit with 2 different connection options:

- Right-hand version 4/0
- Left-hand version 4/0

The access door for filter servicing is located either on the left or on the right.

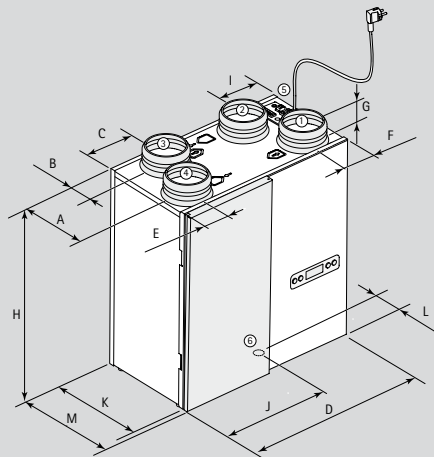
The position of the connections for supply air, exhaust air, extract air and outdoor air is as illustrated below.



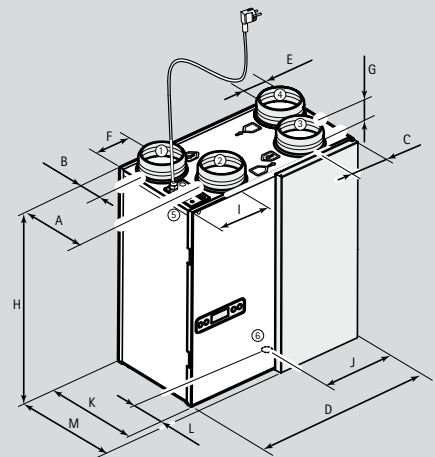
CWL EXCELLENT		180
Energy efficiency class		B ¹⁾
Air flow rate at 150 Pa	m³/h	180
Max. heat provision efficiency	%	92
Dimensions		
Duct connection diameter	mm	125
Height	mm	600
Width	mm	560
Depth	mm	315
Filter category		G4
Power factor	Cos φ	0.56 - 0.67
Power consumption	W	16 - 132
Power consumption (without preheating coil)	W	64 W [at 150 m³/h and 100 Pa]
Weight	kg	25
IP rating	IP	30
Electrical connection		230 V / 50 Hz

¹⁾ A* with min. two sensors

Connection 4/0 L



Connection 4/0 R



1 Supply air (living room)
2 Exhaust air (to the outside)

3 Extract air (living room)
4 Outdoor air (from the outside)

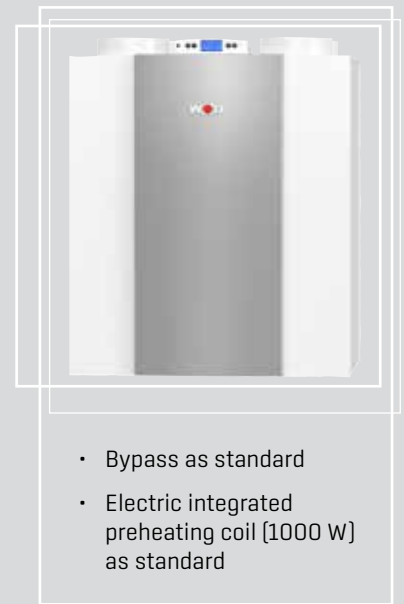
5 Electrical connection
6 Drain connection

Type	A	B	C	D	E	F	G	H	I	J	K	L	M
CWL-180 Excellent R/L	213	77	125	560	75	79	45	600	168	248	290	145	315

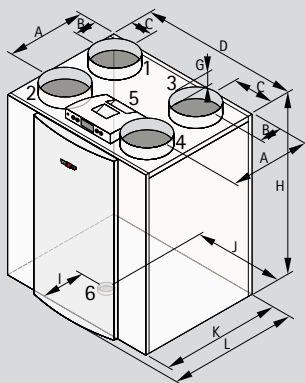
COMFORT MECHANICAL VENTILATION CWL-300/400 EXCELLENT SPECIFICATION

CWL EXCELLENT		300	400
Energy efficiency class ¹⁾		A	A
Air flow rate at 150 Pa	m³/h	300	400
Max. heat provision efficiency	%	89	93
Dimensions			
Duct connection diameter	mm	160	180
Height	mm	765	765
Width	mm	677	677
Depth	mm	564	564
Filter category		G4	G4
		[F7 as accessory]	[F7 as accessory]
Power factor	Cos φ	0.37 - 0.51	0.38 - 0.61
Power consumption	W	3 - 138	3 - 172
Power consumption (without preheating coil)	W	58 W [at 225 m³/h and 100 Pa]	84 W [at 300 m³/h and 100 Pa]
Weight	kg	38	38
IP rating	IP	30	30
Electrical connection		230 V / 50 Hz	230 V / 50 Hz

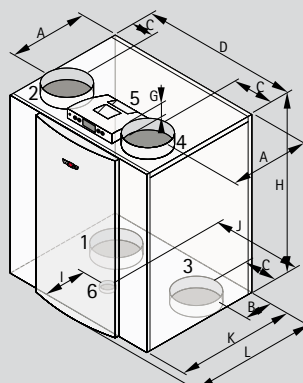
¹⁾ A* with min. two sensors



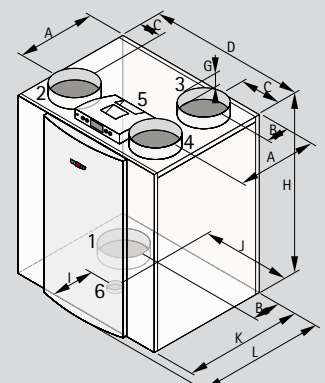
Connection 4/0 R



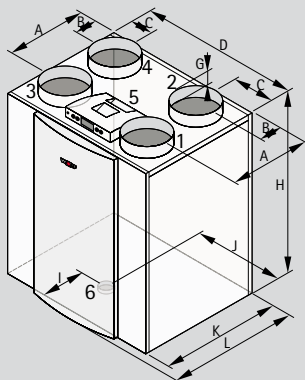
Connection 2/2 R



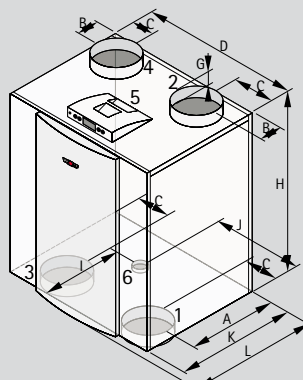
Connection 3/1 R
(CWL-400 Excellent only)



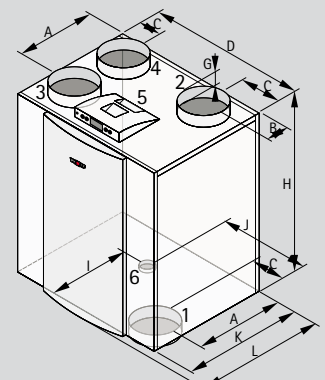
Connection 4/0 L



Connection 2/2 L



Connection 3/1 L



1 Supply air (living room)
2 Exhaust air (to the outside)

3 Extract air (living room)
4 Outdoor air (from the outside)

5 Electrical connection
6 Drain connection

Type	A	B	C	D	G	H	I	J	K	L
CWL-300/400 Excellent R	388	138	138	677	45	765	198	397	526	564
CWL-300/400 Excellent L	388	138	138	677	45	765	328	280	526	564

COMFORT MECHANICAL VENTILATION

CWL-T-300 EXCELLENT

SPECIFICATION

CWL-T EXCELLENT		300
Energy efficiency class ¹⁾		A
Air flow rate at 150 Pa	m³/h	300
Max. heat provision efficiency	%	93
Dimensions		
Duct connection diameter	mm	160
Height	mm	1287.5
Width	mm	475
Depth	mm	585
Filter category		G4 [F7 as accessory]
Power factor	Cos φ	0.32 - 0.43
Power consumption	W	10 - 164
Power consumption (without preheating coil)	W	86 W [at 225 m³/h and 100 Pa]
Weight	kg	50
IP rating	IP	20
Electrical connection		230 V / 50 Hz

¹⁾ A* with min. two sensors

Installation options
to the right or the left
of the heat generator



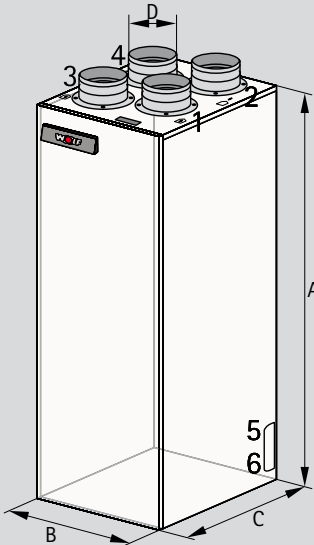
In conjunction with the
TOB oil condensing boiler



In conjunction with CGS-2
gas condensing centre

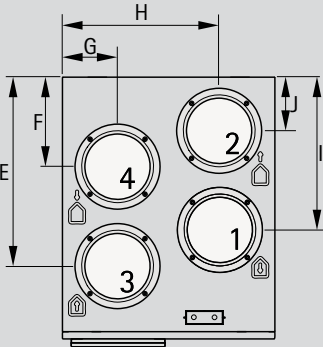


In conjunction with the
BWL-1S split heat pump



Connection 4/0 L

- 1 Supply air (living room)
- 2 Exhaust air (to the outside)
- 3 Extract air (living room)
- 4 Outdoor air (from the outside)
- 5 Electrical connection
- 6 Drain connection



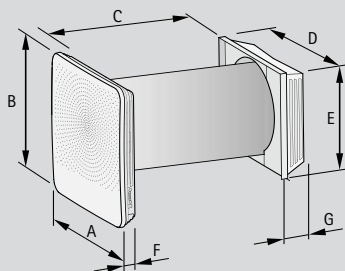
- Removable plastic cross- and countercurrent plate heat exchanger
- Bypass as standard
- Electric 1000 W preheating coil integrated in the appliance
- Category G4 filter; F7 as optional accessory
- Trap included
- Control via BM-2 programming unit
- The automatic frost stat control offers optimum protection against freezing
- Fully wired unit with filter change indicator on the programming unit or the 4-step switch
- Passive house certificate
- DIBT approval pending

Type	A	B	C	D	E	F	G	H	I	J
CWL-T-300 Excellent	1287.5	475	585	160	424	201	123	352	343	121

- White internal panel
- External wall hood in white (RAL 9010) or stainless steel
- Clean, pollen-free fresh air - ventilation with your windows closed, cutting out street noise (not only for allergy sufferers)
- Removable plastic countercurrent plate heat exchanger
- Heat provision efficiency min. 87 %
- Bypass as standard
- Automatic frost protection control
- Low energy consumption due to DC fans
- Electric preheating coil 175 W integrated in unit
- Category G4 filter
F7 as optional accessory for supply air
Filter change indicator on the unit
- Unit fully wired
- DIBt approval applied for



CWL-D		70
Energy efficiency class		A
Air flow rate	m³/h	70
Air handling rate at fan stage 1 / 2 / 3 / 4 / 5		15 / 25 / 40 / 55 / 70
Max. heat provision efficiency	%	87
Dimensions		
Unit diameter	mm	250
Core hole bore	mm	Ø 260 (with 3° fall towards the outside)
for wall thickness incl. accessories	mm	500-600
for wall thickness not incl. accessories	mm	300-500
Filter category		2 x G 4 (extract air) & 1 x G 4 (supply air)
Weight	kg	14
IP rating	IP	Indoor unit IP 20 / front cover IP X4
Electrical connection		230 V / 50 Hz



ACCESSORIES

- Extension in white (RAL9010) or stainless steel
Length: 200mm for wall thicknesses 350-300mm
Length: 150mm for wall thicknesses 400-350mm
Length: 100mm for wall thicknesses 450-400mm
Length: 50mm for wall thicknesses 500-450mm
- Additional PCB (for connecting sensors)
- Internal CO2 sensor and humidity sensor
- ON/OFF switch optional
- G4 and F7 filter sets

Type	A	B	C	D	E	F	G
CWL-D-70	398	398	500 - 600	355	315	65	85

COMFORT MECHANICAL VENTILATION

CWL EXCELLENT

CONTROL - CONTROL ACCESSORIES

CONTROL

Operating panel



MICROPROCESSOR CONTROL UNIT

WITH DISPLAY FOR ADJUSTING AND DISPLAYING THE INDIVIDUAL CONTROL FUNCTIONS

- Set value adjustment of the supply and extract air flow rate
- Fans ON / OFF
- Programmable pressure compensation or pressure balancing - i.e. if required, overpressure or underpressure can generally be deliberately created inside the accommodation via an adjustable value
- Filter alarm on the display (filter service)
- Frost protection
- Displaying the selected values

BM-2 PROGRAMMING UNIT

- Fixed time programmes can be selected
- 3.5" colour display
- Easy user prompts for the plain text display
- Operated by rotary selector with pushbutton function
- 4 function keys for frequently used functions
- microSD card slot for software update
- Installation as a remote control in wall mounting base

CONTROL ACCESSORIES

THE FOLLOWING ACCESSORIES CAN BE CONNECTED DIRECTLY TO THE UNIT:



- **HUMIDITY SENSOR** - ensures that a greater amount of air is extracted automatically when there is excessive humidity (e.g. in the bathroom) (ventilation)
- **AIR QUALITY SENSOR** - ensures that a greater amount of fresh air is fed in automatically when the air quality worsens (e.g. in the living room) (ventilation)
- **CO2 SENSOR** - ensures that a greater amount of fresh air is fed in automatically when the CO2 content is excessive
- **CONTROL OF A REHEATING COIL** (1000 W) - the reheating coil heats the supply air to an adjustable value

AIR QUALITY SENSOR

Mixed gas sensor for recording the air quality;
Output signal 0-10 V, power supply 24 V;
Extension kit for additional functions required for CWL-180 Excellent and CWL-F-300 Excellent

HUMIDITY SENSOR

for recording the relative humidity;
Output signal 0-10 V, power supply 24 V;
Extension kit for additional functions required for CWL-180 Excellent and CWL-F-300 Excellent

CO2 SENSOR

required for CO₂-based operation, fully wired, as lead variable for CO₂-dependent control
Output signal 0-10 V, power supply 24 V
Extension kit for additional functions required for CWL-180 Excellent and CWL-F-300 Excellent



EBUS CO2 SENSOR FLUSH MOUNTED

for measuring the CO2 content,
output signal 0-10 V, power supply 24 V



ISM7E / WOLF LINK PRO – EXTERNAL INTERFACE MODULE

Comprising:

Interface module ISM7e / WOLF LINK PRO, installation and operating instructions, eBus cable, power supply unit, network cable

- LAN and WLAN interface module for wall mounting or mobile use
- Connection of WOLF heating appliances to the WOLF Smartset portal / app
- Mobile application for setting heating system parameters
- Power supply via power supply unit or USB



KNX - EXTERNAL INTERFACE KIT

Interface kit for integrating WOLF ventilation units into a KNX network

Comprising:

ISM8e interface module, KNX-IP-BAOS module, installation/operating instructions, network cable

Note: Can only be used in conjunction with BM-2



MOD-BUS - EXTERNAL INTERFACE KIT

Interface kit for integrating WOLF ventilation units into a Modbus network



EXTENSION KIT FOR ADDITIONAL FUNCTIONS

with connection options for air quality sensor, humidity sensor and reheating coil

Available for CWL-180 Excellent
CWL-F-300 Excellent



MODULAR DISTRIBUTOR RJ12

Comprising:

Cable and splitter



RH DUCT SENSOR

for measuring the relative humidity;
optional

RH duct filter connection kit



CWL SERVICE TOOL

for easier programming

Free software can be found on our homepage



4-STEP SWITCH WITH FILTER CHANGE INDICATOR

- Position 1: Ventilation for moisture protection e.g. during absence (holiday)
- Position 2: Reduced ventilation
- Position 3: Nominal ventilation rate, corresponds to standard operation when the occupants are away
- Position 4: Intensive ventilation rate, e.g. during a party, when there are visitors (high oxygen consumption)

COMFORT MECHANICAL VENTILATION

CWL EXCELLENT

ACCESSORIES



ELECTRICAL PREHEATING COIL OR REHEATING COIL 1000W



ENTHALPY HEAT EXCHANGER FOR MOISTURE RECOVERY

Hygiene: AATCC certificate [VDI 6022]
Heat provision efficiency gm. EN 308: 78 %
Moisture recovery 59 %

Available for CWL-300/400 Excellent
CWL-F-300 Excellent



CONDENSATE REMOVAL PUMP WITH POTENTIAL-FREE ALARM OUTPUT, FULLY WIRED

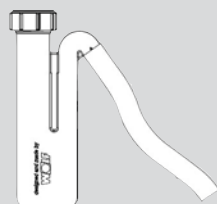
Comprising:
Condensate pump with potential-free alarm output, PVC hose 10 mm [6 m long],
non-return valve, condensate inlet adaptor



SUMMER CASSETTE

Alternative to in-line heat exchangers
without heat recovery

Available for CWL-180-Excellent



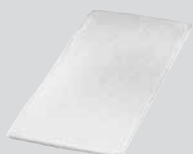
TRAP

Effective height 90 mm

Available for CWL-300/400 Excellent

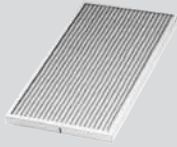


BALL TRAP



FILTER SERVICE SET G4

Outdoor air or extract air filter, 2 x class G4



FILTER SERVICE SET F7

Outdoor air filter, 2 x class F7

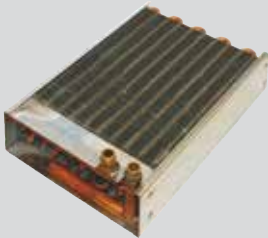


COMBI SERVICE SET, ACTIVATED CHARCOAL FILTER

Outdoor air filter, 2 x class M6

Available for CWL-300/400 Excellent

CWL-T EXCELLENT



HYDRAULIC REHEATING COIL 3000 W

including flow valve with thermostatic head and remote sensor for installation in the supply air insulated duct in addition to automatic vent and corrugated stainless steel pipes

COMFORT MECHANICAL VENTILATION

CWL EXCELLENT

HOW IT WORKS



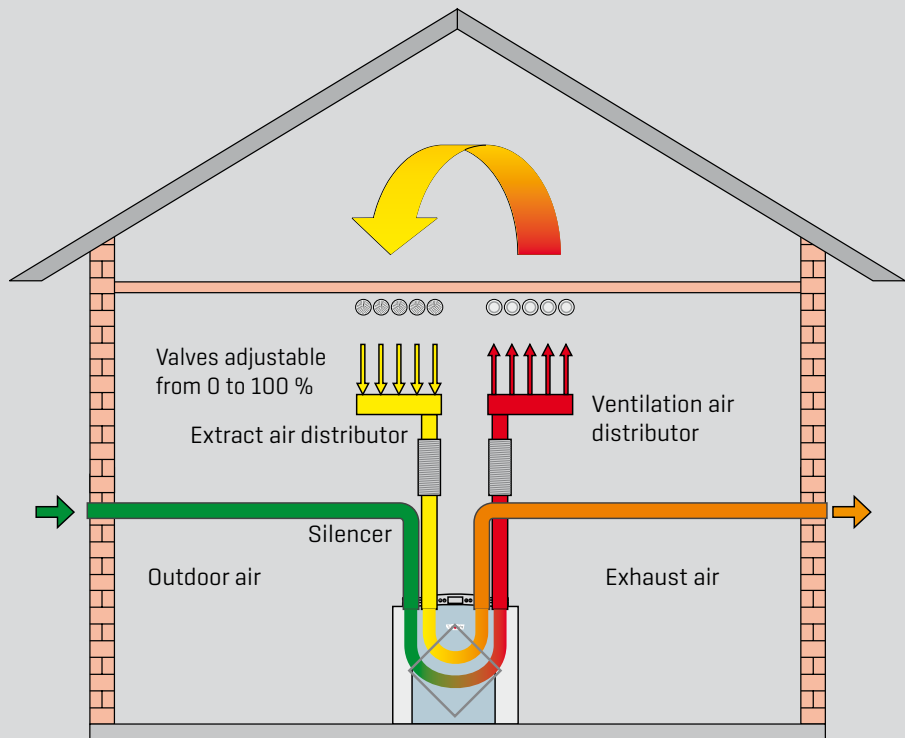
Air routing from the distributor to the valves using a round hose system 75/63 or 63/52



Air routing from the distributor to the vents using flat duct system Excellent 50x100 or Excellent 50x140



Air routing for outdoor air and exhaust air to the supply air and extract air distributor via insulated ducts DN 125/160/180.

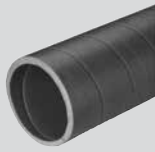


TECHNICAL PROPERTIES OF INSULATED DUCT

- Material density 50 kg/m³, anti-static
- Heat transfer coefficient 0.041 W/(m²K)
- Temperature range -40 °C to +60 °C
- Fire safety class B1 to DIN 4102-1 tested by the MPA Dortmund Institut
- Insulated roof outlet
- A special knife is offered for installation purposes
- Complies with DIN 1946-6

Insulated duct CWL replaces the traditional folded spiral-seam tube with insulation by a ready insulated round pipeline DN 125, DN 160 and DN 180 made from vapour-proof EPE foam with reduced system costs. Perfectly matching pipe elements combined with insulated roof outlets for superior system benefits:

- Quick installation [savings in labour costs up to 70 % compared with folded spiral-seam tube]
- Consistent tightness of the pipework
- Consistent insulation [prevents the formation of condensate]
- Good sound insulation thanks to the relatively soft material
- Easy cleaning due to optimum smooth internal surface without edge
- Connection of profiles by means of twist-proof locking ring
- Visually and operationally perfect, even after many years in use
- Wall thickness 16 mm = DN 125, DN 160, DN 180



INSULATED DUCT CWL

Length 2000 mm

DN 125
DN 160
DN 180



INSULATED DUCT CWL BENDS 90° AND 45°

DN 125
DN 160
DN 180



INSULATED DUCT CWL T-PIECE

DN 125
DN 160



INSULATED DUCT CWL Y-PIECE 45°

DN 180



INSULATED DUCT CWL REDUCER

DN 160/125
DN 180/125
DN 180/160



LOCKING RING

for joining pipes and profiles with anti-twist protection.

DN 125
DN 160
DN 180



FIXING BRACKET FOR INSULATED DUCT

DN 125
DN 160
DN 180



SPECIAL KNIFE

for trimming pipes to size.
The special teeth facilitate a quick and clean cut.

COMFORT MECHANICAL VENTILATION

CWL EXCELLENT / CWL

INSULATED DUCT SYSTEM



CWL ROOF OUTLET WITH THERMAL INSULATION

Length 1159 mm

Colour: black or red DN 125 and DN 160

Colour: black DN 180



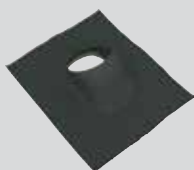
UBBIFLEX HIGH TACK – GLUE

for fixing the CWL universal roof tile on tiles or roof



SEALING COLLAR

for CWL roof outlet



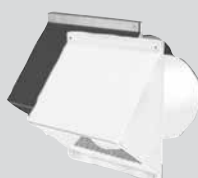
CWL UNIVERSAL ROOF TILE 25° TO 45°

Colour: black or red DN 125 - DN 180



CWL FLAT ROOF OUTLET 0°

DN 125 - DN 180



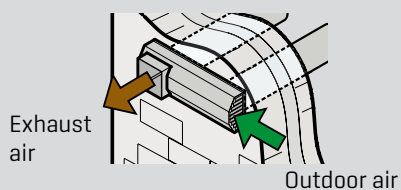
CWL WALL MOUNTED HOOD WITH GRILLE

Colour: black or white

DN 125

DN 160

DN 180



DOUBLE GRILLE

for outdoor air and exhaust air

Colour: white

DN125 for CWL-F-150 Excellent and CWL-180 Excellent

DN160 for CWL-F-300 Excellent and CWL-300 Excellent



SILENCER

for supply air or extract air
Length 1000 mm

DN 125, 50 mm insulation
DN 160, 50 mm insulation
DN 180, 50 mm insulation

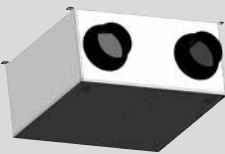


SILENCER

metal, for supply air and extract air
Length 482 mm

DN125

Available for CWL-F-150 Excellent



SILENCER

metal for supply air and extract air
Length 600 mm

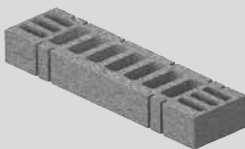
DN160

Available for CWL-F-300 Excellent



SILENCER AND FLOW RATE CONTROLLER

for connector DN 125



SILENCER AND FLOW RATE CONTROLLER

for floor grill connector

COMFORT MECHANICAL VENTILATION

CWL EXCELLENT / CWL

GENERAL INFORMATION / FLEXIBLE DUCT SYSTEMS

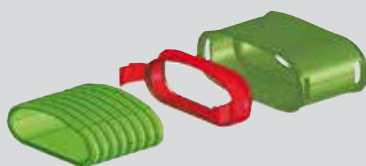
FLEXIBLE ROUND DUCT SYSTEM



Pipe systems specially designed for ventilation equipment, for flexible routing across ceilings, in false ceilings and in walls.

Twin layer construction (smooth interior, corrugated exterior) ensures: good acoustic insulation thanks to low flow resistance; high rigidity but still extremely flexible, low weight. The Excellent flat duct system is also (optionally) odourless and antibacterial due to using environmentally-friendly material (PE) and hygienically safe new material. Both the flexible round hose system and the Excellent flat duct system can also feature minimal dust deposits thanks to (optional) antistatic internal skin. Hygienically perfect thanks to an easy-to-clean special internal skin. Tested without measurable contaminant concentration in the air. Shorter installation times thanks to easy working without special tools; no waste thanks to endless routing via click joints; direct routing on unfinished concrete, screed or in false ceilings; watertight and airtight to EN 1610 thanks to the use of seal rings at joints. Two diameters are available for the flexible round hose system (A:75/I:63 mm or A:63/I:52 mm). The Excellent flat duct system is available in the sizes 50 x 100 mm and 50 x 140 mm.

FLEXIBLE FLAT DUCT SYSTEM



SIZING

An optimum operation can be achieved when the flow rate inside the pipe is limited to approx. 3.0 m/s (low resistance).

The supply and extract air vents can be preset when the maximum pipe length (15 m in a detached house) and the pressure drop details are known. This reduces the adjustment time considerably.

The flow rate is, relative to the recommendation of approx. 3.0 m/s:

Flexible hose system, round:

Single hose routing DN 63/52 approx. $\pm 20 \text{ m}^3/\text{h}$

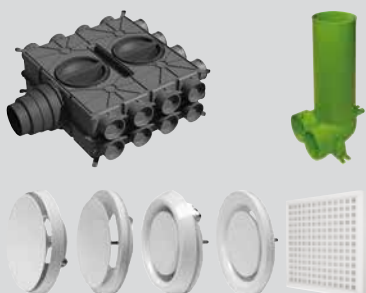
Single hose routing DN 75/63 approx. $\pm 30 \text{ m}^3/\text{h}$

Excellent flat duct system:

Single duct routing 50 x 100 mm up to $30 \text{ m}^3/\text{h}$

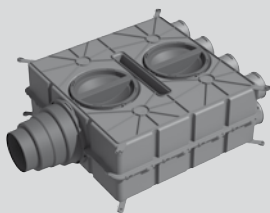
Single duct routing 50 x 140mm up to $55 \text{ m}^3/\text{h}$

ROUTING INFORMATION



Various air distributors are available for supply and extract air distribution in the building. Supply and extract air vents are integrated into the hose system via the connectors.

The supply and extract air lines, air distributors and connectors for the supply and extract air vents are mainly routed and installed on the unfinished floor. These components may also be routed and installed in intermediate ceilings. The supply and extract air vents can be installed in the ceiling and in the wall.



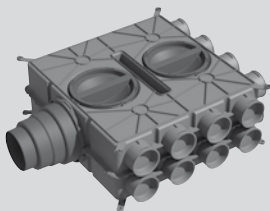
AIR DISTRIBUTOR DN125-180

plastic, for supply air or extract air,
antistatic and antibacterial

8 connectors DN75 with 4 pipe caps

An adaptor is required to attach flexible pipe or
flat duct connections DN 63, 50x100 and 50x140 to the
air distributor. For 50x140, max. 6 connections possible.

Note: Click and seal ring DN 75 required.



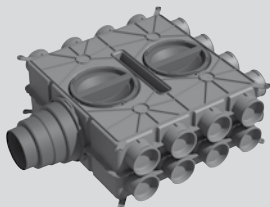
AIR DISTRIBUTOR DN125-180

plastic, for supply air or extract air,
antistatic and antibacterial

16 connectors DN75 with 8 pipe caps

An adaptor is required to attach flexible pipe or
flat duct connections DN 63, 50x100 and 50x140 to the
air distributor. For 50x140, max. 12 connections possible.

Note: Click and seal ring DN 75 required.



AIR DISTRIBUTOR DN125-180

plastic, for supply air or extract air
antistatic and antibacterial

24 connectors DN75 with 12 pipe caps

An adaptor is required to attach flexible pipe or
flat duct connections DN 63, 50x100 and 50x140 to the
air distributor. For 50x140, max. 18 connections possible.

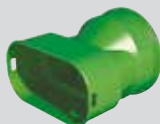
Note: Click and seal ring DN 75 required.



ADAPTOR DN63

for connection to the air distributor DN125-180,
plastic, antistatic and antibacterial

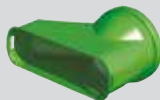
Note: Click and seal ring DN 63 required.



ADAPTOR FOR FLAT DUCT 50X100

for connection to the air distributor DN125-180,
plastic, antistatic and antibacterial

Note: Seal ring 50x100 required.



ADAPTOR FOR FLAT DUCT 50X140

for connection to the air distributor DN125-180,
plastic, antistatic and antibacterial

Note: Seal ring 50x140 required.



RESTRICTOR DN 75

for air distributor DN 125-180,
plastic, antistatic and antibacterial
10 pce



BEND 90°

DN 63
DN 75

COMFORT MECHANICAL VENTILATION
CWL EXCELLENT
FLEXIBLE HOSE SYSTEM, ROUND



AIR DISTRIBUTION HOSE

with a smooth internal skin, antistatic and antibacterial DN 63/52, roll 50 m
 DN 75/63, roll 50 m

with a smooth internal skin DN 63/52, roll 50 m
 DN 75/63, roll 50 m



CLICK CONNECTOR FOR AIR DISTRIBUTION HOSE

antistatic and antibacterial DN 63/52
 DN 75/63



SEAL RING

DN 63/52, bag 10 pce
 DN 75/63, bag 10 pce



PIPE CAP

antistatic and antibacterial DN 63/52
 DN 75/63

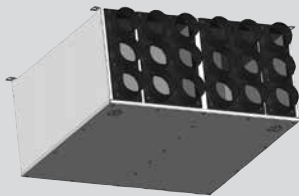


AIR DISTRIBUTOR

metal, for supply air and extract air, incl. silencer
 Sound attenuating material, closed cell to DIN 1946-6
 Length 482mm

DN 125: for each 2x10 connectors DN 75/63 with 5 pipe caps

Available for CWL-F-150 Excellent

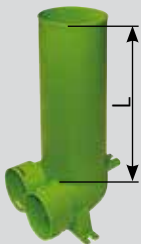


AIR DISTRIBUTOR

metal, for supply air and extract air,
 Sound attenuating material, closed cell to DIN 1946-6

DN 160: for each 2x9 connectors DN 75/63 with 5 pipe caps

Available for CWL-F-300 Excellent



**CONNECTOR FOR VALVE DN 125, ONE PIPE CAP
 AND TWO PIPE CONNECTORS**

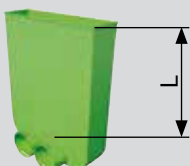
incl. cover connector for valve DN 125,
 antistatic and antibacterial DN 63/52, L = 325 mm
 DN 75/63, L = 325 mm

Note: Click and seal ring required.



CLICK RING

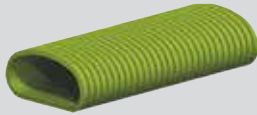
antistatic and antibacterial DN 63/52, [10 per bag]
 DN 75/63, [10 per bag]



FLOOR GRILL CONNECTOR

one pipe cap and two pipe connectors
 antistatic and antibacterial DN 75/63, L = 300 mm

Note: Click and seal ring required. For DN 63 adaptor use DN 63.



FLAT DUCT

with smooth internal skin,
antistatic and antibacterial

50x100, roll 50m
50x140, roll 20m



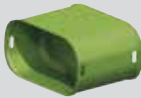
CWL 90° BEND FOR FLAT DUCT

antistatic and antibacterial

50x100, vertical
50x100, horizontal

50x140, vertical
50x140, horizontal

Note: seal ring required.



CLICK CONNECTOR FOR FLAT DUCT

antistatic and antibacterial

50x100
50x140

Note: seal ring required.



SEAL RING FOR FLAT DUCT

antistatic and antibacterial

50x100, bag 10 pce



SEAL RING FOR FLAT DUCT

antistatic and antibacterial

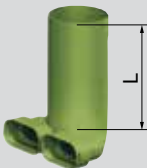
50x140, bag 10 pce



PIPE CAP FOR PROFILE

antistatic and antibacterial

50x100, bag 10 pce
50x140, 10 per bag

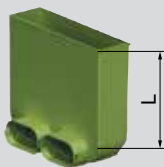


CONNECTOR FOR VALVE DN 125

one or two duct connectors and one pipe cap,
antistatic and antibacterial, incl. cover connector for valve DN 125

Length L = 240 mm 50x100 - 90°
Length L = 330 mm 50x140 - 90°

Note: seal ring 50x100 or 50x140 required.

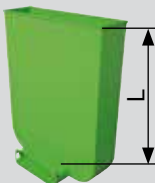


FLOOR GRILL CONNECTOR

one or two duct connectors and one pipe cap,
antistatic and antibacterial, incl. cover

Length L = 220 mm 50x100 (two channel connectors)

Note: Seal ring 50x100 required.



FLOOR GRILL CONNECTOR

one duct connector and one pipe cap,
antistatic and antibacterial, incl. cover

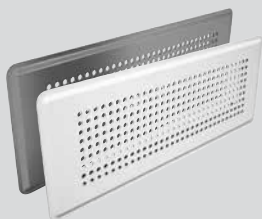
Length L = 240 mm 50x140 (one channel connector)

Note: Seal ring 50x140 required.

COMFORT MECHANICAL VENTILATION

CWL EXCELLENT

EXCELLENT FLAT DUCT SYSTEM



FLOOR GRILLE, METAL

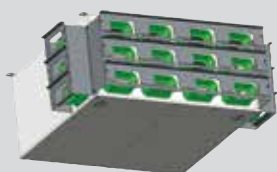
white or stainless steel



AIR DISTRIBUTOR

metal, for supply and extract air
incl. silencer for direct installation on the CWL-F-150 Excellent. Sound attenuating material, closed cell to DIN 1946-6

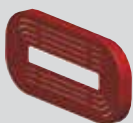
DN125: for each 2x6 connectors 50x100 with 3 pipe caps



AIR DISTRIBUTOR

metal, for supply and extract air
incl. silencer for direct installation on the CWL-F-300 Excellent. Sound attenuating material, closed cell to DIN 1946-6

DN160: for each 2x9 connectors 50x100 with 5 pipe caps



RESTRICTOR FOR FLAT DUCT

antistatic and antibacterial 50x100, bag 10 pce

Available for CWL-F-150 Excellent

FLEXIBLE ROUND HOSE SYSTEM AND FLAT DUCT



90° ADAPTOR FROM DN 75 ROUND TO FLAT DUCT 50X100

antistatic and antibacterial

Note: Click and seal ring required.



ANGLE ADAPTOR 2X ROUND DN 75 TO 1X FLAT DUCT 50X140

antistatic and antibacterial

Note: Click and seal ring required.



UNIVERSAL CLIP FOR FLAT DUCT 50X100, 50X140 AND ROUND TUBE Ø 63 MM AND Ø 75 MM

10 pce



SUPPLY AIR VENT PLASTIC DN 125



SUPPLY AIR VENT METAL DN 125



EXTRACT AIR VENT PLASTIC DN 125



EXTRACT AIR VENT METAL DN 125

FILTER BAG

5 pce

Available for CWL extract air vents



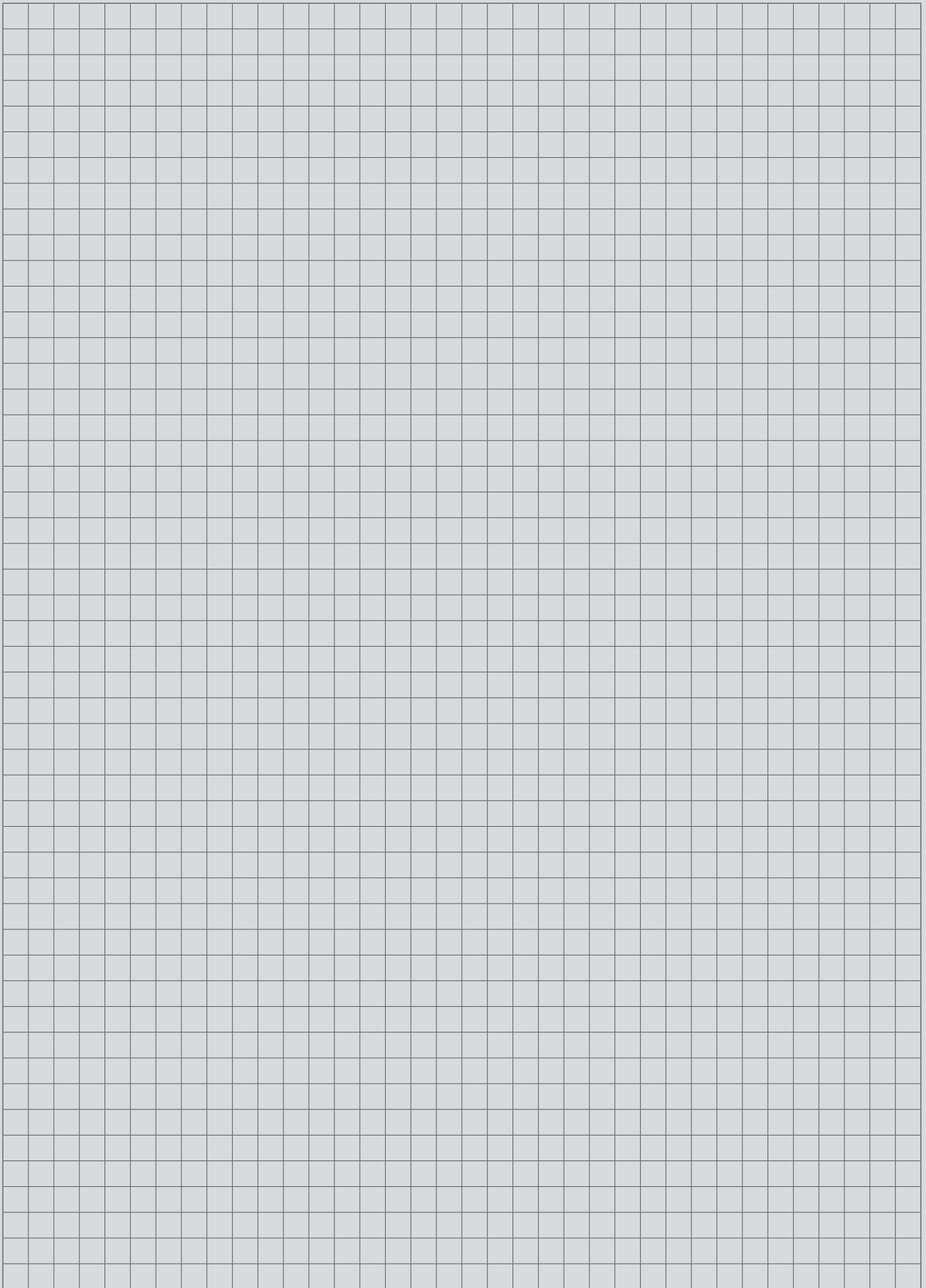
KITCHEN EXTRACT AIR VENT WITH FILTER G3

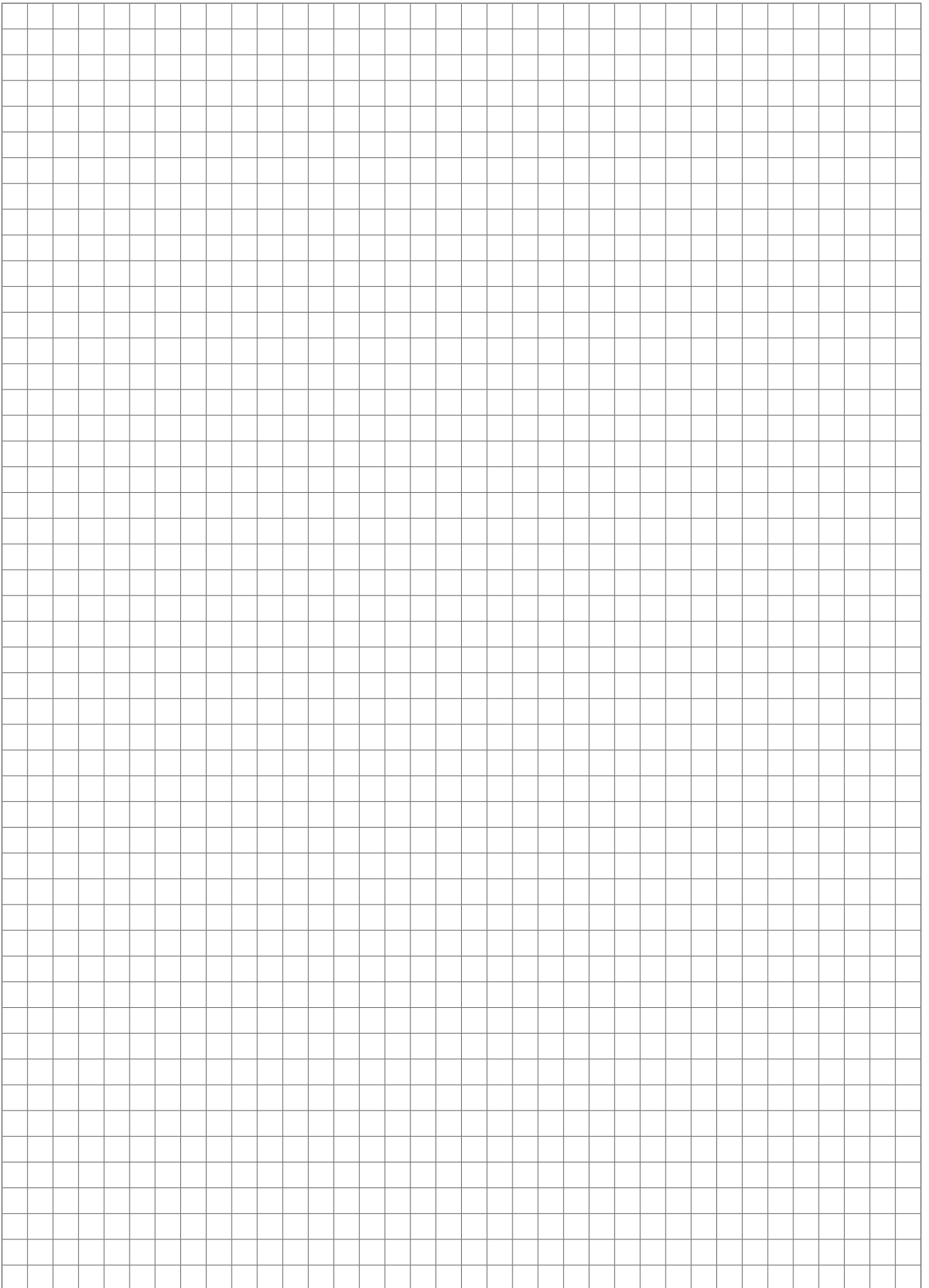
FILTER MAT G3

5 pce

Available for kitchen extract air vents

NOTES





Dealer address

WOLF GMBH / P.O. BOX 1380 / D-84048 MAINBURG / TEL. +49.0.875174-0 / FAX +49.0.875174-1600 / www.WOLF.eu

